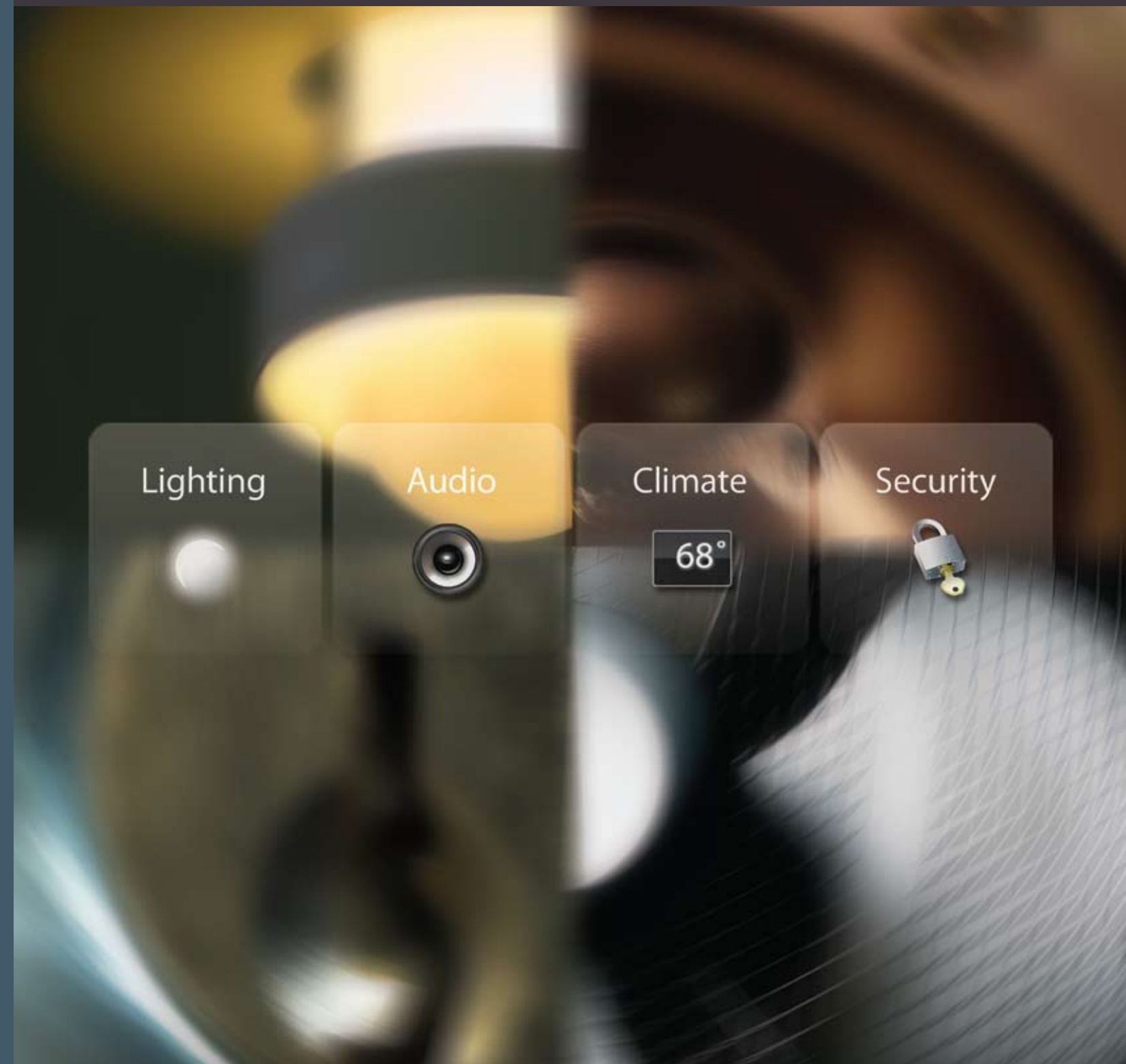


## Home Automation Systems



main 970 203 3700  
800 987 VNET (8638)  
fax 970 203 3701  
www coloradovnet.com



## Colorado vNet . . . a Leader in Home Automation

Colorado vNet pre-integrated lighting, audio, climate and security control systems...designed for the homeowner, but engineered for the custom integrator.

Colorado vNet provides proven solutions to the home automation market that are fast and easy to install and beautifully designed to accent any décor.

### Simple Integration and Installation

Our easy-to-use floorplan interface lets you drag and drop lighting components and simulate actual lighting effects on the screen. There's also a wizard that walks through the steps to configure the audio, climate and security modules.

### Flexible and Scalable

Colorado vNet distributed processing systems easily scale from a few modules in a small home theater to thousands in a very large home providing market-leading reliability and flexibility at lower cost points.

## Striking Design

Striking visual style and intuitive user interfaces are as important to us as they are to your clients. After all, the user experience is defined by what's on the walls, not behind them.



### Sleek Touchscreens

The flush-mounted 7" widescreen display offers a sleek sophisticated design that simply begs to be touched! A variety of pre-programmed visual backgrounds, ranging from elegant to whimsical, allow your customer's personality to shine through.

But this touchscreen is not just for looks. Our professionally designed and rigorously tested user interface makes navigating the system easy and enjoyable.

### Award-Winning Touchpads

Award-winning touchpads are the primary touchpoint for both Colorado vNet wired and wireless retrofit lighting and control systems. Customizable to the décor of the home, these touchpads fit standard Decora® style faceplates and provide unlimited design possibilities—make them stand out or make them blend in. With clear, easy-to-read labels, these touchpads are the essence of simplicity.

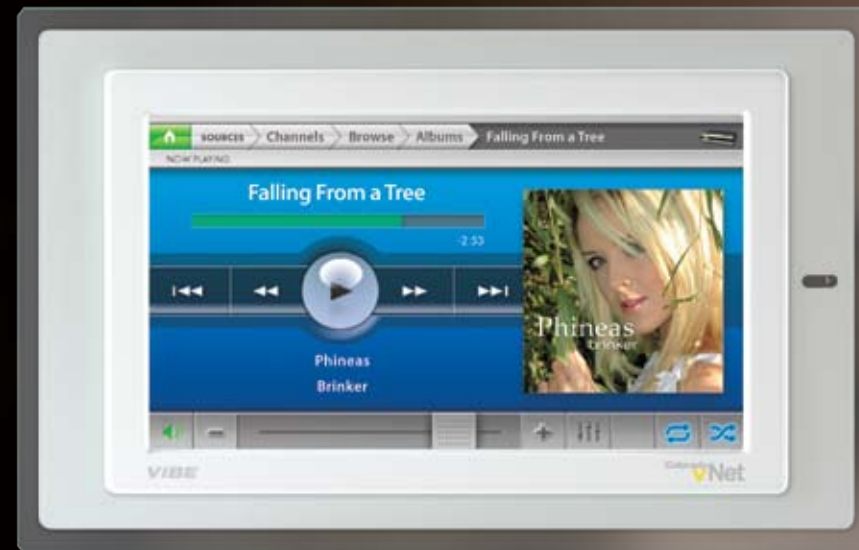


The Colorado vNet wired Touchpad earned an Electronic House Product of the Year Award in 2006 and the wireless Touchpad Dimmer was named Product of the Year for 2007.



## IP-Based Digital Distributed Audio

The Vibe™ Audio System delivers remarkable style, unparalleled control and crystal clear, reference-quality sound to every room. Vibe utilizes Internet Protocol (IP) to communicate audio data to multiple locations and devices. With digital distribution, signal loss and noise normally associated with analog installations are eliminated.



**VIBE™**

### Sleek, Powerful Interface

The elegant design of the Vibe Color Touchscreen Amplifier is enticing. Its built-in 70 Watt digital amplifier combines sound quality with instant, intuitive control of each audio source, anywhere on the system.

Stream multiple independent programs to different rooms simultaneously. Display metadata and full color cover art with the touch of a finger.

### Flexible and Scalable

With Vibe's distributed architecture, there's no matrix switch to limit the number of zones and sources. Data and audio processing occur within each Vibe module offering ultimate flexibility and scalability.

The Vibe system accommodates a wide range of audio sources, including the Vibe Audio Server, iPod® docks, SIRIUS/AM/FM tuners and nearly all consumer electronic devices. Easily expand by plugging additional components into the network router. Vibe provides capacity for up to 40 zones and 20 different sources.

### Easy Installation

Using IP, Vibe components link together via network routers and CAT-5e wiring, which makes the system fast and easy to set up.

With our intuitive software, simply name the sources and zones and the wizard walks through setup and commissioning. Add new modules to the system with the press of a button.



SIRIUS/AM/FM Tuner Module



Vibe Dock for iPod®

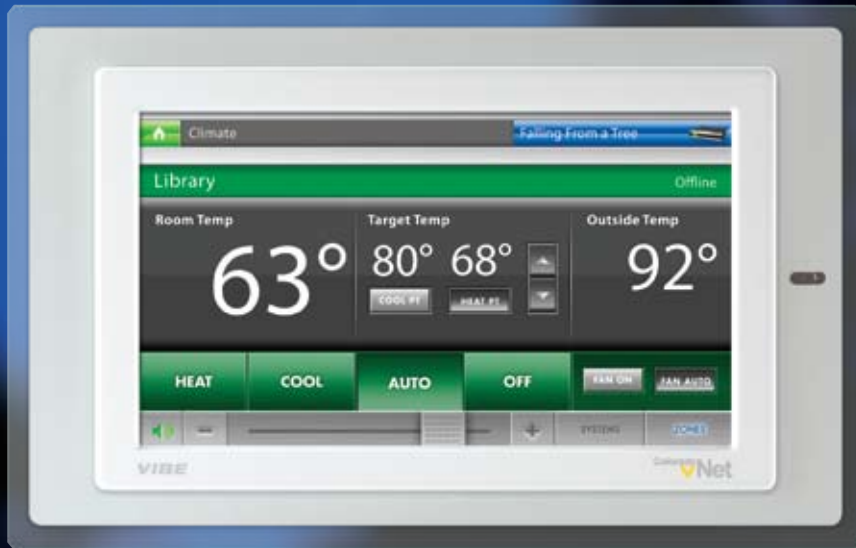


Vibe Audio Server



# Climate and Security Control

The pre-integrated Colorado vNet Climate and Security Applications allow homeowners to manage their climate and/or security systems using our award-winning Touchscreen.



### Convenient Simplicity

Connecting the Aprilaire® climate system to our Climate Application enables multi-zone, touchscreen-based management of temperature and humidity. With a single tap, any Touchscreen can turn up the heat, cool things down or vary

the humidity of any room in the house. Outside temperature is also displayed on all climate-enabled Touchscreens.

Similarly, using the Security Application, all the functions of a standard Honeywell security keypad are integrated into each Touchscreen. Homeowners save

steps by arming or disarming one or multiple partitions from any Touchscreen. They can separately arm the main house and guest house with just one security system or notify fire, police or medical response teams if necessary using large, easily identified panic buttons.

### Easy Installation

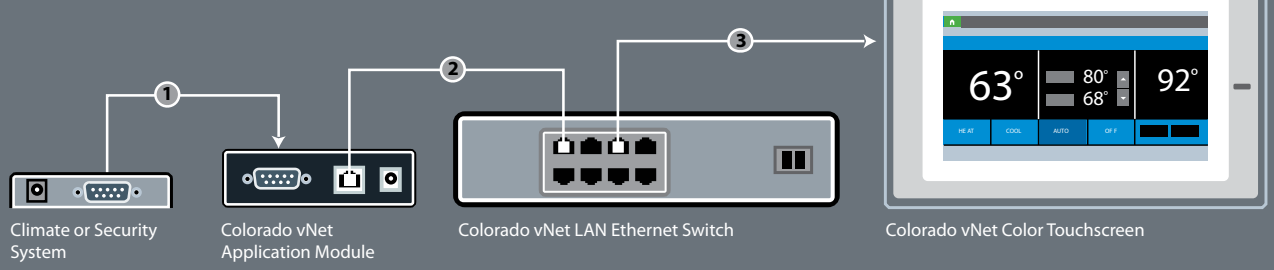
Installation is a breeze with our software wizard. Simply choose a name for each zone or security partition. No drivers or interface programming are required—it's already done.

Application Modules provide a powerful connection point between the Touchscreens and climate and/or security systems.

### Clutter-Free Walls

Eliminate the clutter of thermostats, security keypads, audio controls and light switches by incorporating them into a single Touchscreen. Clients will appreciate the combination of practical technology with a clean, stylish look.

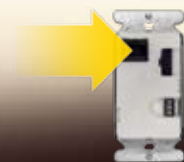
### Installation is as easy as 1-2-3





# Lighting & Control, Simplified

Control lights, shades, theater screens, fireplaces, fans and more with the revolutionary Colorado vNet Lighting & Control System.



Designed primarily for new construction, our Lighting & Control System is not only the most reliable, scalable and stylish system in the industry, but it's also the easiest to install.

From our unique drag-and-drop design software...to CAT-5e cable that provides data and power to modules...to proven distributed processing technology and Dimming Modules you can install almost anywhere—it all adds up to fast, easy and high quality installations every time.

### Easy Installation & Programming

CAT-5e cables connect and power system modules. No expensive proprietary cables are required. A single Dimming Module handles nearly all lighting and motor load types and our configurable Touchpad provides multiple button layouts with just one SKU. Always have the right hardware on hand with these versatile Colorado vNet products.

The elegant and powerful Dimming Module offers silent, fanless operation and paintable faceplates. It installs just about anywhere in the house—place in a hallway, hide in a 3rd floor closet or centralize in the mechanical room.

Create lighting scenes with vNet Builder™, the industry's only floorplan-based software. Simply drag-and-drop devices, program scenes and view lighting effects with our real-time lighting simulator—all before pulling the first wire.

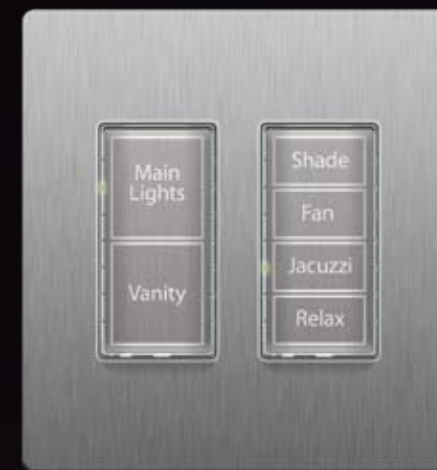
After installation, edit lighting scenes remotely. Login to quickly modify the lighting in a client's great room while they watch.



### Highly Scalable & Reliable

Every module in a Colorado vNet Lighting & Control System handles its own processing. With no central processor there's no single point of failure, so if one module should fail, the rest of the system continues to operate without interruption. This distributed intelligence creates unique scalability—add modules one at a time or by the dozens. Install as few as three modules and expand to over 5,000 with identical SKUs.

Using the same proven Controller Area Network (CAN) found in real-time, life-critical controls, such as car brake pedals operating calipers and lights, our system is both fast and reliable.



### Unique Design, Simple Versatility

Having won two consecutive Product-of-the-Year awards, Colorado vNet Touchpads offer more than just a pretty face. Several vertical and horizontal layouts let you choose from one to eight buttons and program any function: dim/brighten, up/down, etc. Labels are easily printed to match the home's décor with custom graphics, colors and fonts using vNet Builder software. If homeowners change their minds after installation, easily reprint labels with new buttons and graphics. No need for new hardware or custom engraving.



### Dimming Module

- Supported Load Types:
- Incandescent
- Magnetic Low Voltage
- Electronic Low Voltage
- Fluorescent
- Compact Fluorescent
- LED
- Neon/Cold Cathode
- Variable-speed Motors
- Fixed-speed Motors
- Motor Pairs





# Wireless Lighting & Control

Perfect for both retrofit and new construction, our Wireless Lighting & Control System provides the same functionality, reliability, stylish design and simple programming as our wired Lighting & Control System.



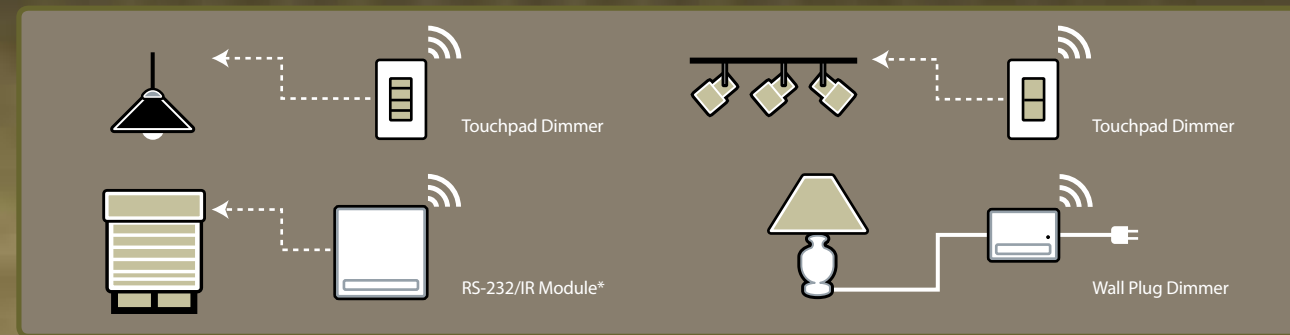
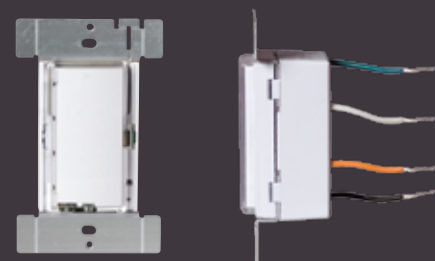
One Button Wireless Touchpad



Using standard high voltage wiring with state-of-the-art radio frequency (RF) controlled dimming touchpads, whole-house or single room scenes are set with the touch of a button using wireless communications.

### Robust Communication

Designed for ZigBee®, the Colorado vNet wireless system uses industry-leading high-powered transceivers and mesh networking to provide unprecedented range and reliability. Spread spectrum technology and encrypted data transmissions make it highly secure—perfect for large estates or multiple dwelling units.



### Integrated Touchpad Dimmers

Elegantly simple and intuitive, our award-winning Touchpad Dimmer represents a union of quality appearance, ergonomic design and superior system architecture. With customizable color labels, the Touchpad Dimmer provides unlimited design possibilities to match any décor.

Our wireless system does not require separate dimmers and keypads. The integrated wireless Touchpad Dimmers offer complete scene control using a 1000 Watt dimmer, RF transceiver, mesh network repeater and programmable buttons, making the system powerful, reliable and simple.

### With or Without Neutral Wires

Touchpad Dimmers work with or without a neutral wire. Intelligently checking for a neutral presence, the Touchpad Dimmer automatically adjusts the dimming range, resulting in maximum wattage delivery.

### Easy Programming

Tired of running around the house pushing buttons to program a system? Our wireless system is quickly programmed with vNet Builder™, the same innovative, drag-and-drop design software used for our wired Lighting & Control System. A built-in lighting simulator allows system testing and demonstration to clients before installing a single device.

### Complete Control

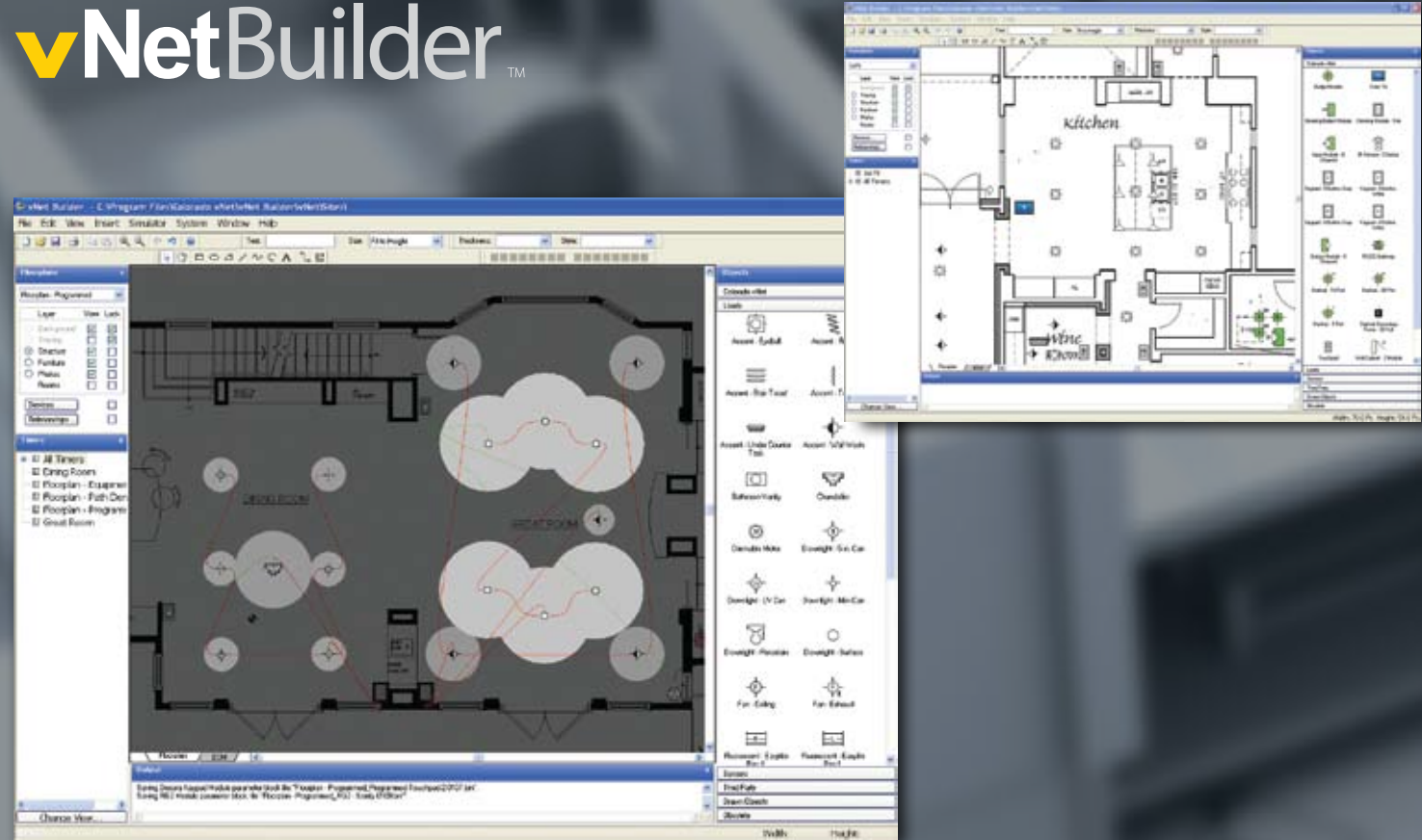
More than just Touchpad Dimmers, the full line of Colorado vNet wireless products comprise a complete control system. Control lamps and other plug-in devices, shades, fireplaces, gates, etc. Likewise, the system can trigger scenes based on inputs from PIRs and other sensors, RS-232 or IR controllers, and even time-of-day or sunrise/sunset settings.

### Wireless to Wired Integration

Seamless integration of the Colorado vNet wireless system with our wired Lighting & Control System is quick and simple. Control wireless lighting from the same Touchscreen that controls the Vibe Audio System and Colorado vNet Climate and Security Applications.



# vNetBuilder™



## Floorplan-Based Lighting System Design

vNet Builder™ is the industry's only design software that can import a floorplan from nearly any format and create a lighting control system on top of it.

## Layout

Import floorplans from scans or architectural files including AutoCAD. Drag and drop loads, sensors and other third party devices followed by Colorado vNet control modules for simple, fast layouts. Use our virtual wiring tool to quickly connect devices and modules.

## Demonstration

Show lighting scenes to clients before the first wire is pulled using our real-time lighting simulator. Once viewed, homeowners instantly understand the impact and potential of lighting systems, making your sale much easier.

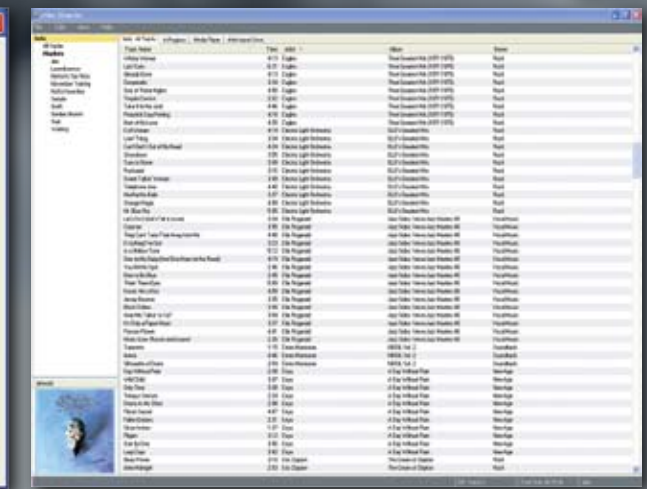
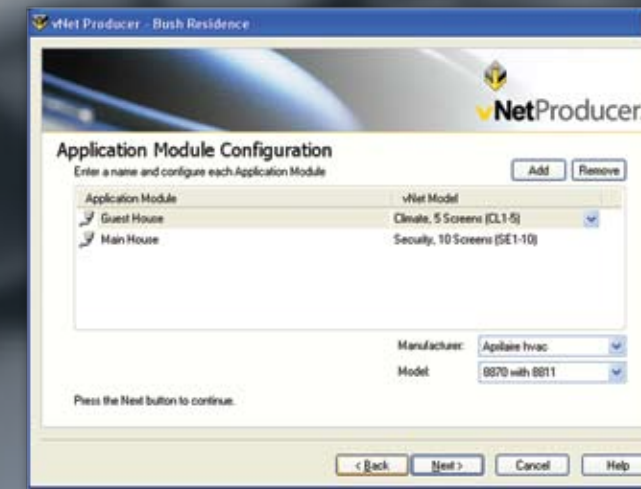
## Documentation

Automatically generate Bills of Materials, even when layout changes are made. Avoid costly mistakes with automatic wiring and installation diagrams for all Colorado vNet devices. Print out the high voltage wiring diagrams and give them to the electrician—you'll both be pleased with the results. Customize touchpad configuration and print labels and graphics to complement room décor.

## Remote Programming

Remotely access projects via the Internet to adjust lighting levels, re-program scenes or generate up-to-date diagrams and reports.

Download software applications free from our website at [www.coloradovnet.com](http://www.coloradovnet.com)



## Wizard-Based Configuration

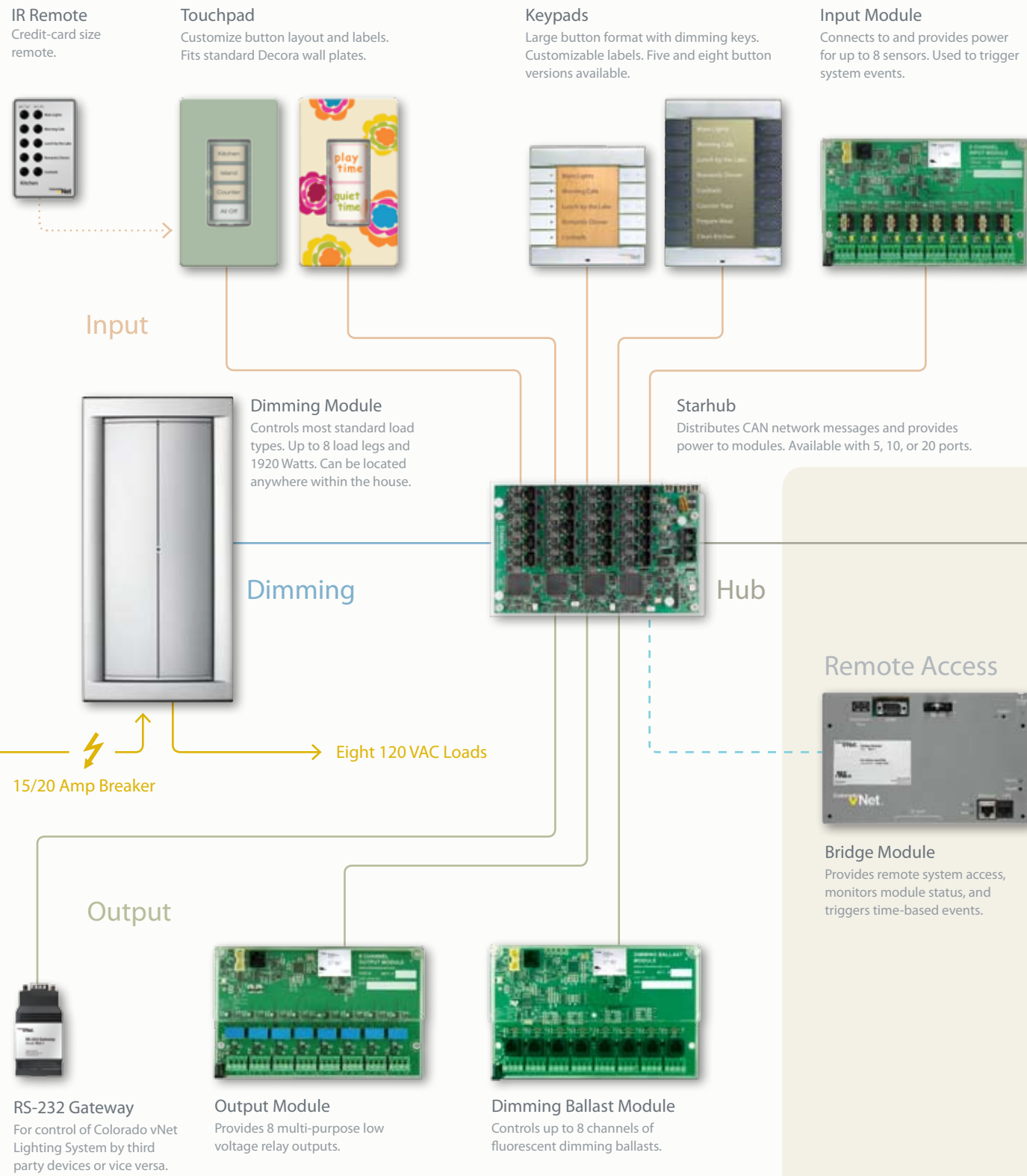
vNet Producer™ is used to configure the Vibe Audio, Climate and Security Applications. Set quantities and names for each device—for example, "Kitchen iPod Dock" and "Mom's FM Tuner."

A simple wizard guides the setup and commissioning process. An internal database provides a reference set of IR codes to which you can easily add your own codes. Learn and test IR codes directly using the IR Learning Device. Once configured, manage site information—sharing and retrieving data at any time.

## Simple Music Management

vNet Director™ is an intuitive PC-based application allowing homeowners to manage their music on Vibe Audio Servers. Family members can import music files from iTunes® and Windows Media Player™, rip audio CDs and create their own custom playlists, organizing by artist, album title, track title, track time or genre.

## Wired Lighting System



## Wireless Lighting System

